



# Ctek Asset Manager Android and iPhone Application

Tech Note – TN4048  
December 14, 2020  
Version 1.37

1891 N. Gaffey St. Ste. E  
San Pedro, CA 90731

p. 310.241.2973

support@ctekproducts.com  
www.ctekproducts.com

# Table of Contents

1. <b>Introduction</b> .....	3
2. <b>System Requirements</b> .....	3
3. <b>Application Flow</b> .....	3
4. <b>Icon Index</b> .....	6
5. <b>VPN Client</b> .....	7
6. <b>Notifications and Alarming</b> .....	8
Disabling Notifications Through iOS Settings .....	8
Disabling Notifications Through Android Settings .....	8
7. <b>Screenshots</b> .....	9

# Introduction

---

Ctek Asset Manager is an Android and iOS application that is used to get real time data from your Ctek Wireless Controllers. The application uses your SkyCloud credentials to safely provide and manage data.

## System Requirements

---

The Ctek Asset Manager is available for download from the Apple App Store on iOS devices, and is available for download on the Google Play Store for Android Devices. The application is available for free to download, and requires no special permissions.

### Android

Must be using Android 5.0 (Lollipop) or higher.

### iOS

Must be using iOS 8.0 or higher.

### Ctek Wireless Controller

Must be using Ctek Firmware 7.01.03.02 or higher

## Application Flow

---

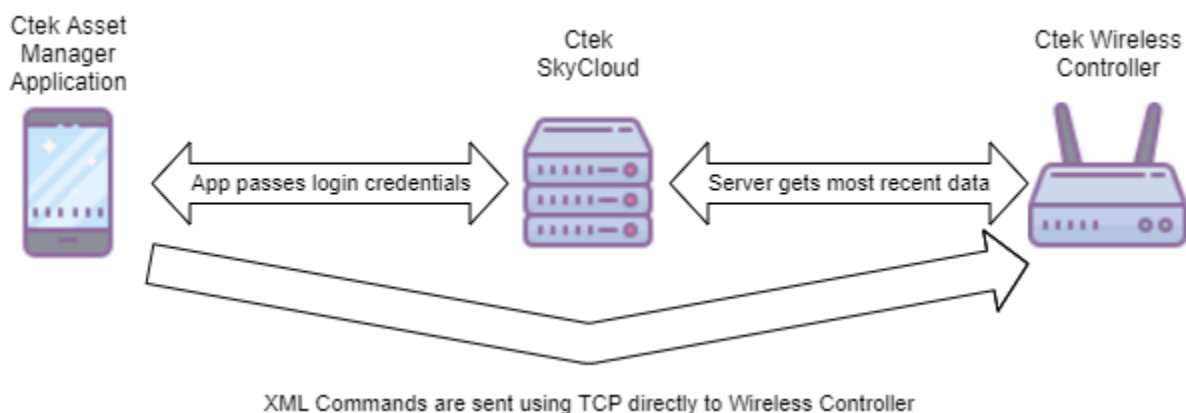
Using the same credentials as with the Ctek SkyCloud website, you may log in to the Asset Manager application.

Query Path: Ctek Asset Manager retrieves information using HTTPS. Select a unit, and the most recent data from that controller will be presented.

Update Path: Output pins in a configuration may be updated using the Asset Manager App. Pins marked with a Pencil Icon are editable. Changes to the configuration are sent using a direct XML update path.

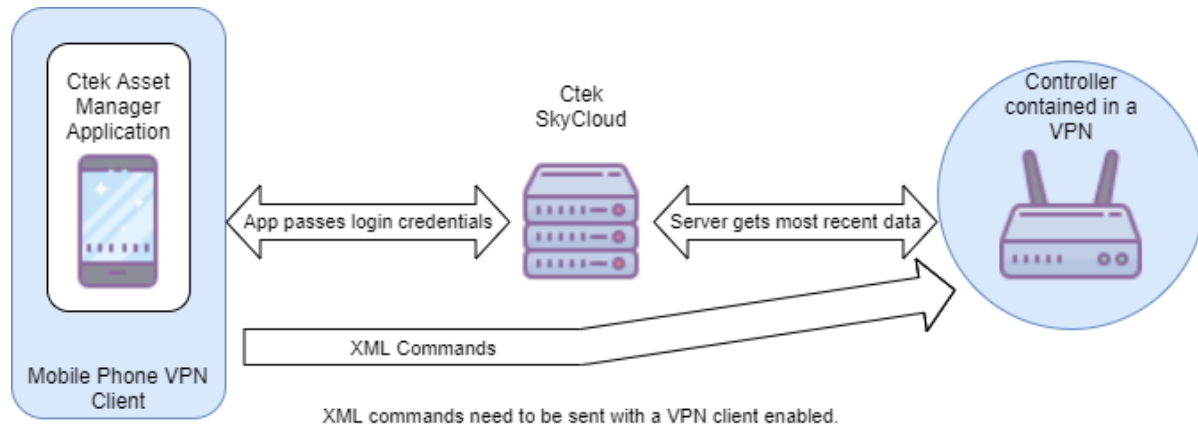
### Overview

If the Ctek Wireless Controller is on a public IP address.



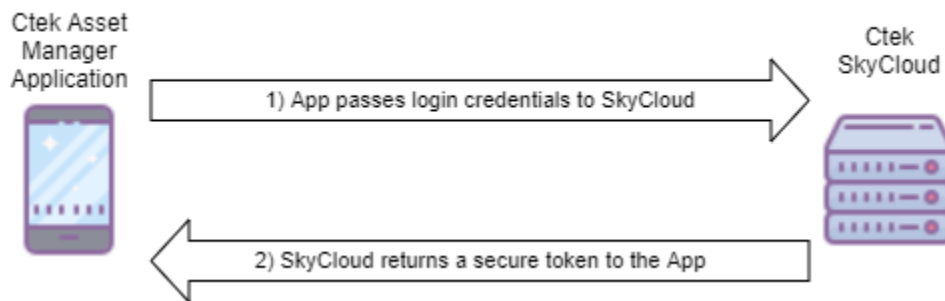
## Overview VPN

If the Ctek Wireless Controller is not on a public address



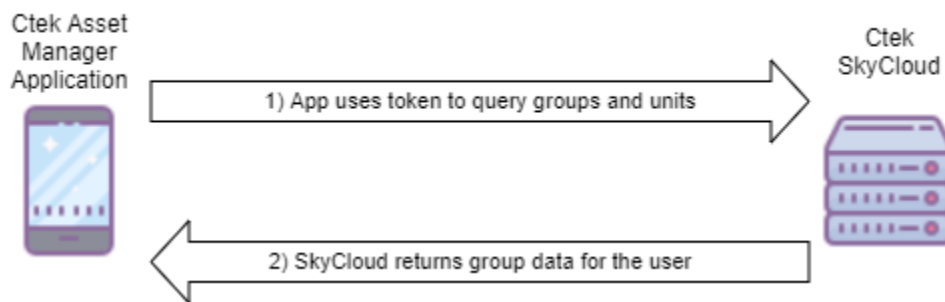
## Authenticating

Users are authenticated using the same login as their SkyCloud account. A token is used for all transactions between the device and the SkyCloud server.



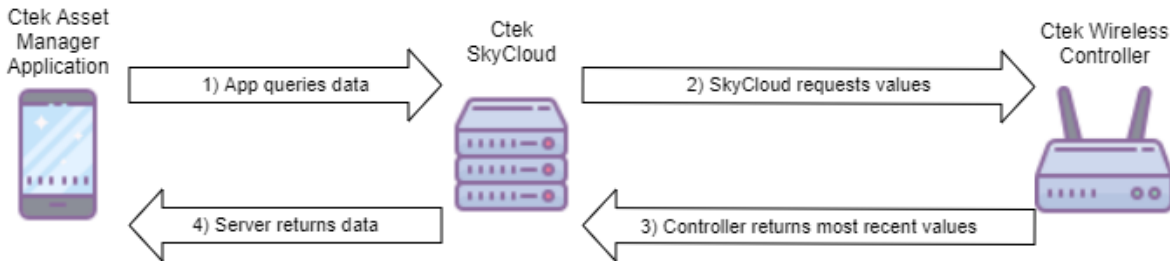
## Current Status

The application automatically queries all of the associated wireless controllers.



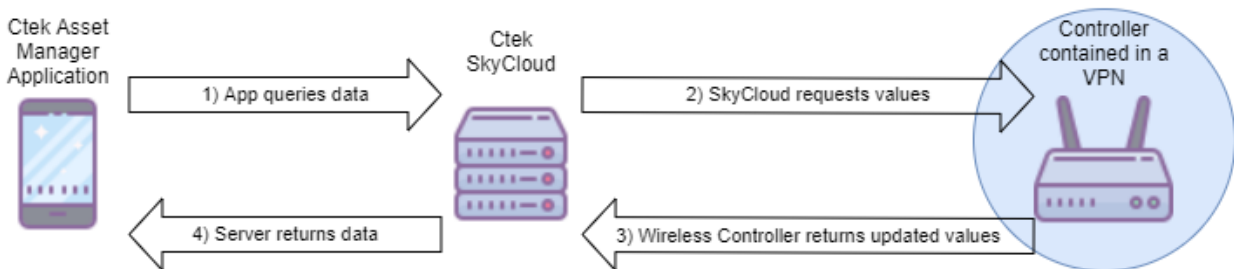
### Requesting Updated Status

Initially, the application will automatically query the server. The server will interface with the selected Wireless Controller, causing it to update values to the most current status. After the initial query, the application will no longer update values unless you initiate an update request. To initiate an update request, select the Refresh Icon.



### Getting Data from a Wireless Controller on a VPN

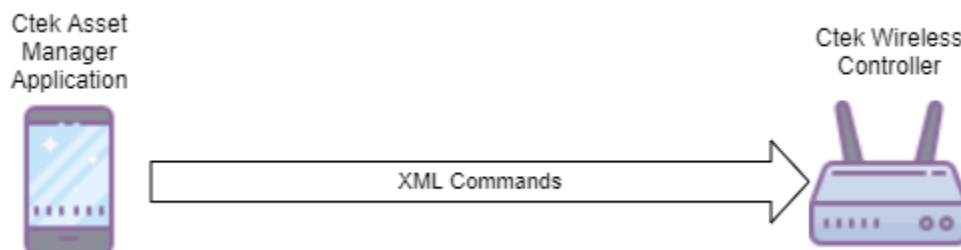
Because the mobile device does not interface with the Wireless Controller directly, the mobile device does not need to be connected to a VPN to receive status, or request updated status.



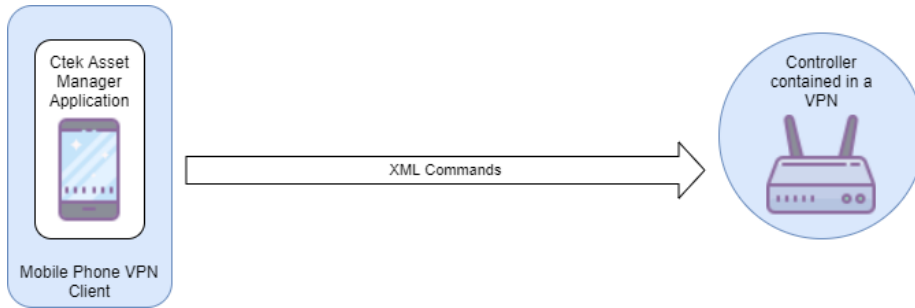
### Updating a Wireless Controller Using XML

Individual pins in a configuration can be changed using the Ctek Asset Manager Application. This is done by sending XML packets to the IP address of your device.

Note: The IP Address for each wireless controller is automatically retrieved by Ctek Asset Manager.



If your Wireless Controller is on a VPN, your device will need to have a VPN client enabled when sending XML commands.



## Icon Index

---

### Status Lights



A Grey Light Indicates that no Status is available, or the last update was over 24 hours ago.



### Unit and Pin Indicators

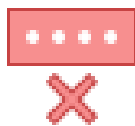
- The Pencil Icon indicates that a pin's configuration can be updated through the app.



- The Library Icon indicates that a group listing is an "All Devices" listing.



- The Wrong Password Icon indicates that the credentials provided for a unit were incorrect



## Top Bar Icons

- The Refresh Icon will request updated data for the specified configuration



- The Filter Icon will allow you to change the current visible panel.



- The Account Icon will allow you to log out of your account.



## Bottom Bar Icons

- The Unit Icon will allow you to view the current configuration



### Test Unit

- The Commands Icon will allow you to view the general XML commands to send to the wireless controller. (Only available when using the application without using credentials)



### Commands

- The Open Browser Icon will open your iPhone or Android device's browser and visit the IP address of your controller. Note: If your wireless controller is behind a VPN you may need to enable a VPN on your mobile device to see the controller's webpage.



### Open Browser

## VPN Client

---

Updating configurations of wireless controllers may require the use of a VPN client. Both iOS and Android offer standard VPN clients within the settings. Applications such as "VpnCilla" are available on the Google Play Store, and are easy to use. If more assistance is needed with a VPN client, please contact Ctek.

# Notifications and Alarming

---

As of v1.37, the Ctek Asset Manager Application is capable of pushing alarms straight to your Android or iOS device. These alarms come in the form of Push Notifications. IOS devices will be asked to allow notifications the first time that the application is launched. If the app is not given permission to show notifications, alarms will not be able to reach your iOS device. Android devices have notifications enabled by default. Instructions for enabling / disabling notifications on your Android or iOS device can be found below.

Push notification functionality is tied to alarming in Automation Control. Information for enabling alarms in Automation Control can be found in tech note TN1007-Automation Control. Once alarms are enabled all you need to do is log in on the Ctek Asset Manager Application, then alarms will be received by your device as long as your device is on and has access to internet.

If your device is initially unable to receive the alarm, the alarm will continuously attempt to reach the device for 4 weeks. After 4 weeks, the alarm will no longer be able to reach your Android or iOS device.

To stop receiving notifications, users have two options:

- Manually disable notifications through your Android or iOS device settings
- Log out of your user account through the Ctek Asset Manager Application

## Disabling Notifications on iOS

To disable notifications on your iOS device, open the “Settings”. Select the setting for “CtekAssetManager”, then select “Notifications”. Turn the slider titled “Allow Notifications” to the off position to disable notifications. To enable notifications, simply switch the slider to the on position.

## Disabling Notifications on Android

To disable notifications on your android device, open the “Settings”. Select the “Apps” option, then select “Ctek Asset Manager”. Then select the “Notifications” option and turn the “Show Notifications” slider to the off position. To enable the notifications, follow the steps above and turn the “Show Notifications” slider to the on position.

NOTE: Exact process to disable notifications on Android may vary by device. Please check Manufacturer instructions for more detailed information.



# Screenshots

Application screenshots were taken using an android device.

